



# SOFT AS LEATHER

The sophistication and richness of leather in all its forms. With the Leather range, your décor creates a charming “animal” effect which causes a sensation without harming any animals. Different textures allow you to create a very specific mood in all the areas you want to tackle in your renovation projects. Are you looking to add a touch of class to your establishment? Then put these voluptuous, sensation-creating colours in your lounges or on furniture such as chair backrests or cabinet doors.



Leather gives your interior the impression of breathing. It has this characteristic of being unique and therefore of making each piece of furniture just as much.



The audacious touch which your interior needed.



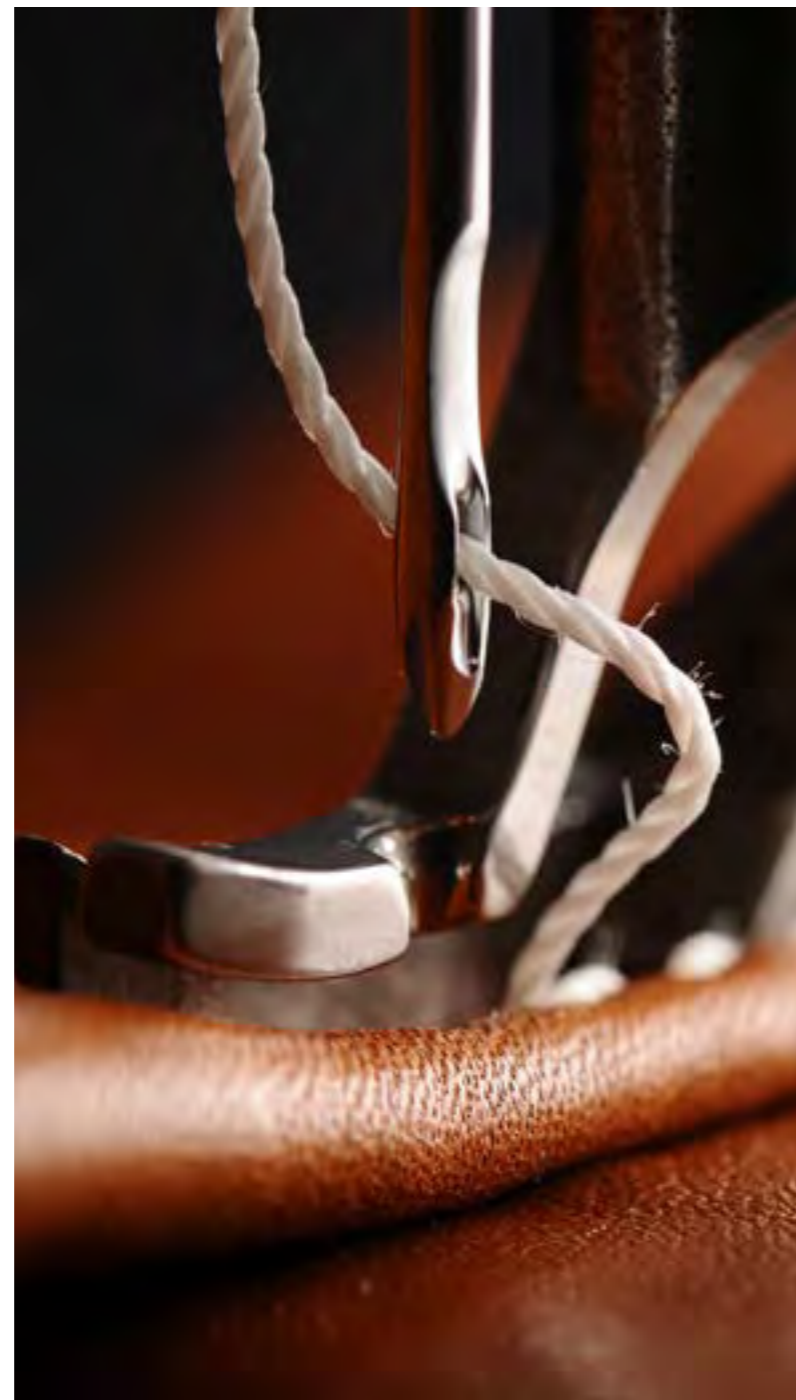




NE42 —

Our Leather range will be the perfect partner in your search for the missing touch of luxury to your door, wall or furniture.  
Our wide range of colours and textures will be the ideal solution for your room

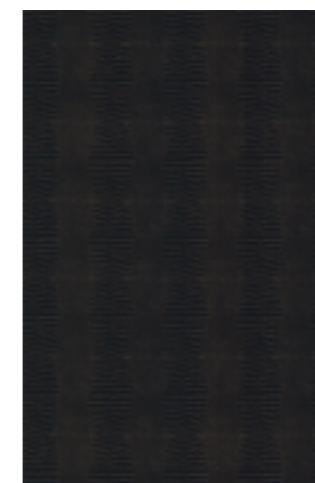
# LEATHER COLLECTION



**X51** - Coal Black Leather



Cover Styl' Binder p. 113



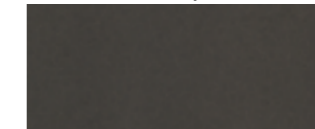
**X6** - Chocolate Leather Crocodile Skin



Cover Styl' Binder p. 113



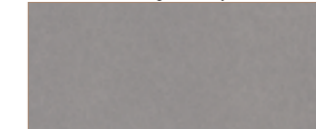
**NE40** - Grey Leather



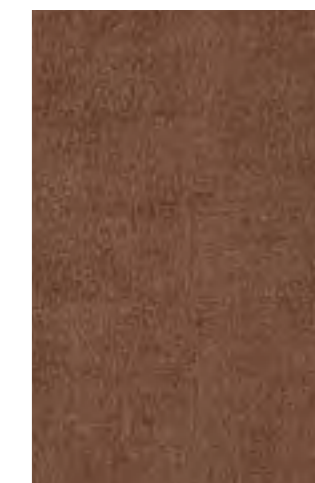
Cover Styl' Binder p. 113



**NE41** - Light Grey Leather



Cover Styl' Binder p. 102



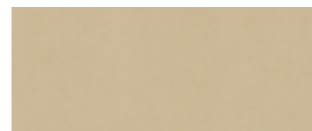
**NG17** - Bronzed Leather



Cover Styl' Binder p. 102



**NE42** - Caramel Leather



Cover Styl' Binder p. 102



**NG20** - Edgy Cream



Cover Styl' Binder p. 103



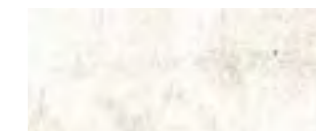
**NE43** - Light Cream Leather



Cover Styl' Binder p. 102



**NG19** - White Bronzed Leather



Cover Styl' Binder p. 102



**NG23** - Structured White



Cover Styl' Binder p. 103